

What Animal Am I?

Activity sheet

Can you guess what animal I am?



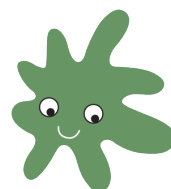
I am a reptile covered in thick, bony scales, just like you can see in my photo!

I live in the semi-arid habitats west of the Great Dividing Range, but you might also find me on the coastal parts of Western Australia and South Australia.

I have a very large head and short blunt tail. Both ends look pretty alike, so it's sometimes hard to tell my head from my tail!

I like to eat a wide variety of plants and animals, although I'm not very agile, so the animals I eat are usually slow moving – like delicious crunchy snails and beetles.

Draw a picture of what animal you think this week's guest might be below!



Discovery